

COVID-19

NOVEL CORONAVIRUS

October 18, 2021 - Update

Manitoba

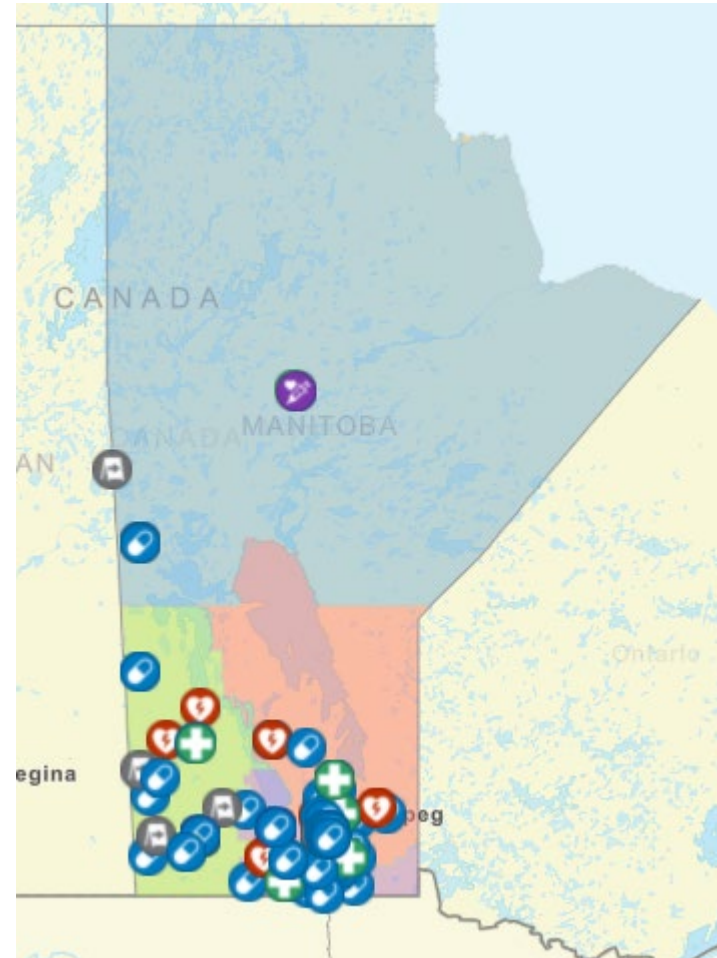


3rd Dose Recommendation

- Manitoba continuing to expand recommendations for 3rd dose
- Today, expanding to include First Nation people living on reserve
- Approximately 7,200 people
- Third dose to be given at least six months after the last vaccine received

Vaccine Finder

- Eligible people can get their flu and COVID vaccines at the same time, when needed
- The online COVID vaccine finder now includes flu shots
- Find it at protectmb.ca or manitoba.ca/vaccine



COVID-19

NOVEL CORONAVIRUS

October 18, 2021 - Update

Manitoba



COVID-19 Cases – As of Oct. 15

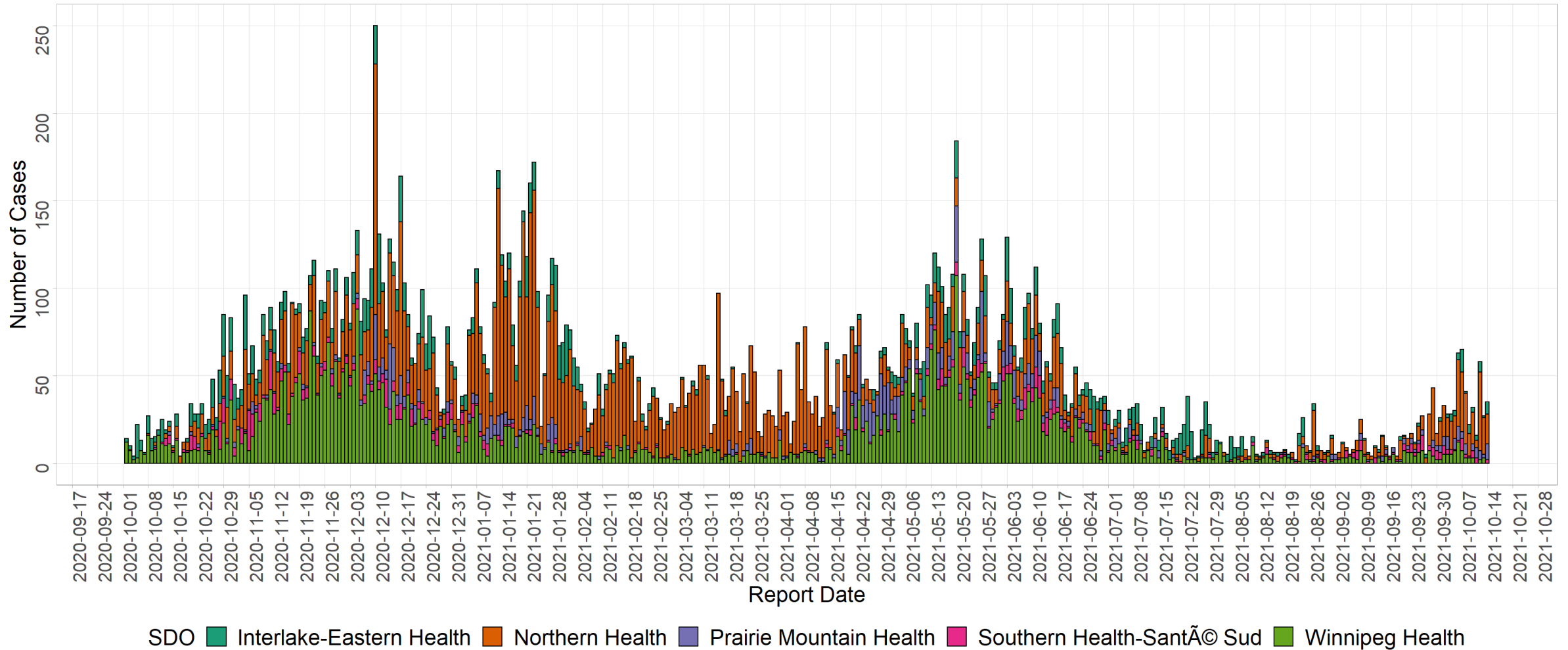
| Metric | On-Reserve | Off-Reserve | Total First Nations | Percentage of Total |
|----------------------------|------------|-------------|---------------------|---------------------|
| New Cases | 31 | 5 | 36 | 39% |
| Presumed active cases | 301 | 53 | 354 | 49% |
| Current hospitalizations | 15 | 13 | 28 | 30% |
| Current ICU | 3 | 2 | 5 | 31% |
| 5-day Test Positivity Rate | 10% | 3% | 8% | 3%* |
| Total Cases | 9,346 | 9,560 | 18,906 | 30 |

* 5 day test positivity rate for Manitoba

COVID-19 NOVEL CORONAVIRUS

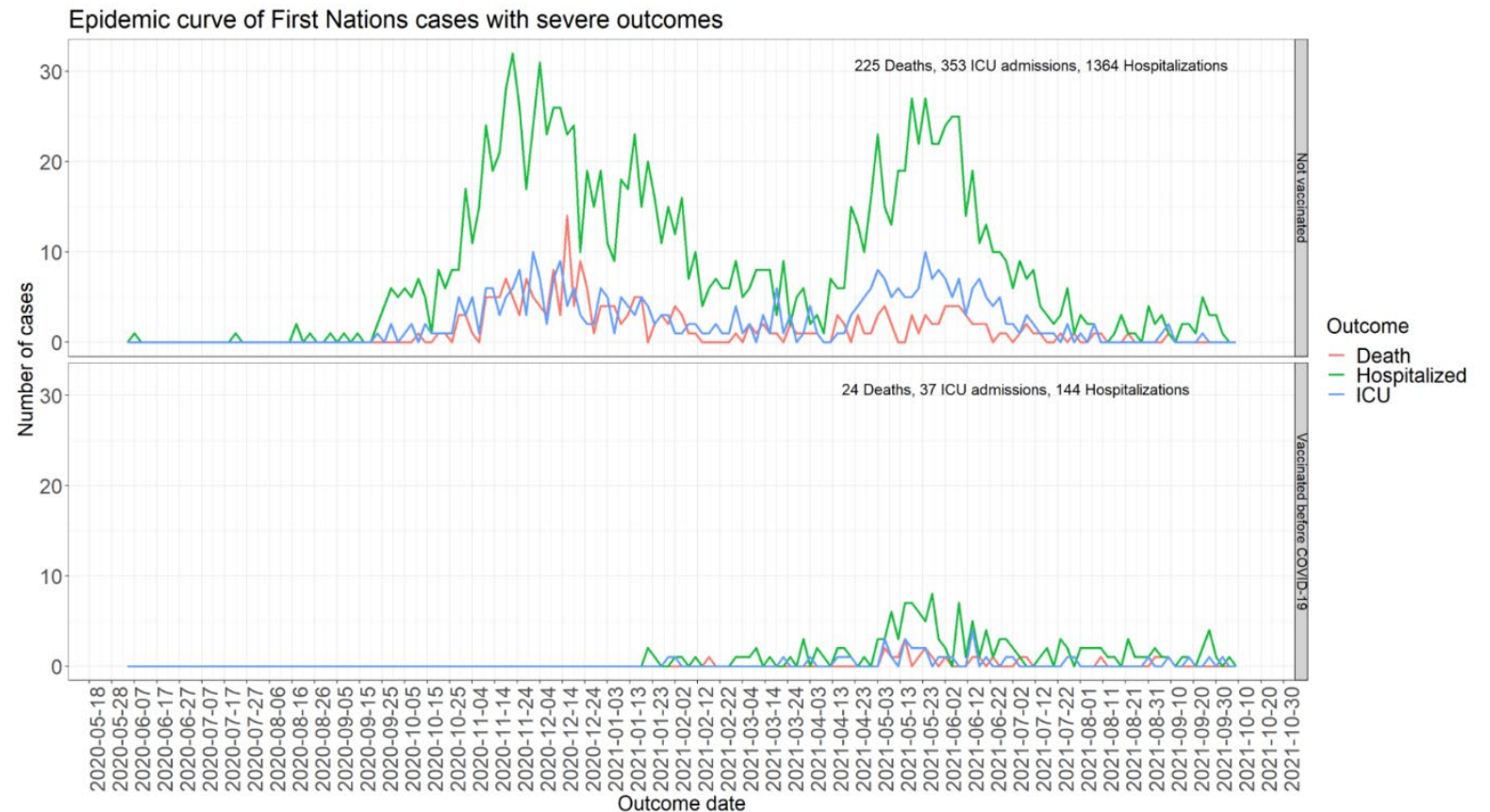


Epidemiologic Curve - First Nations COVID-19 Epidemic Curve by RHA

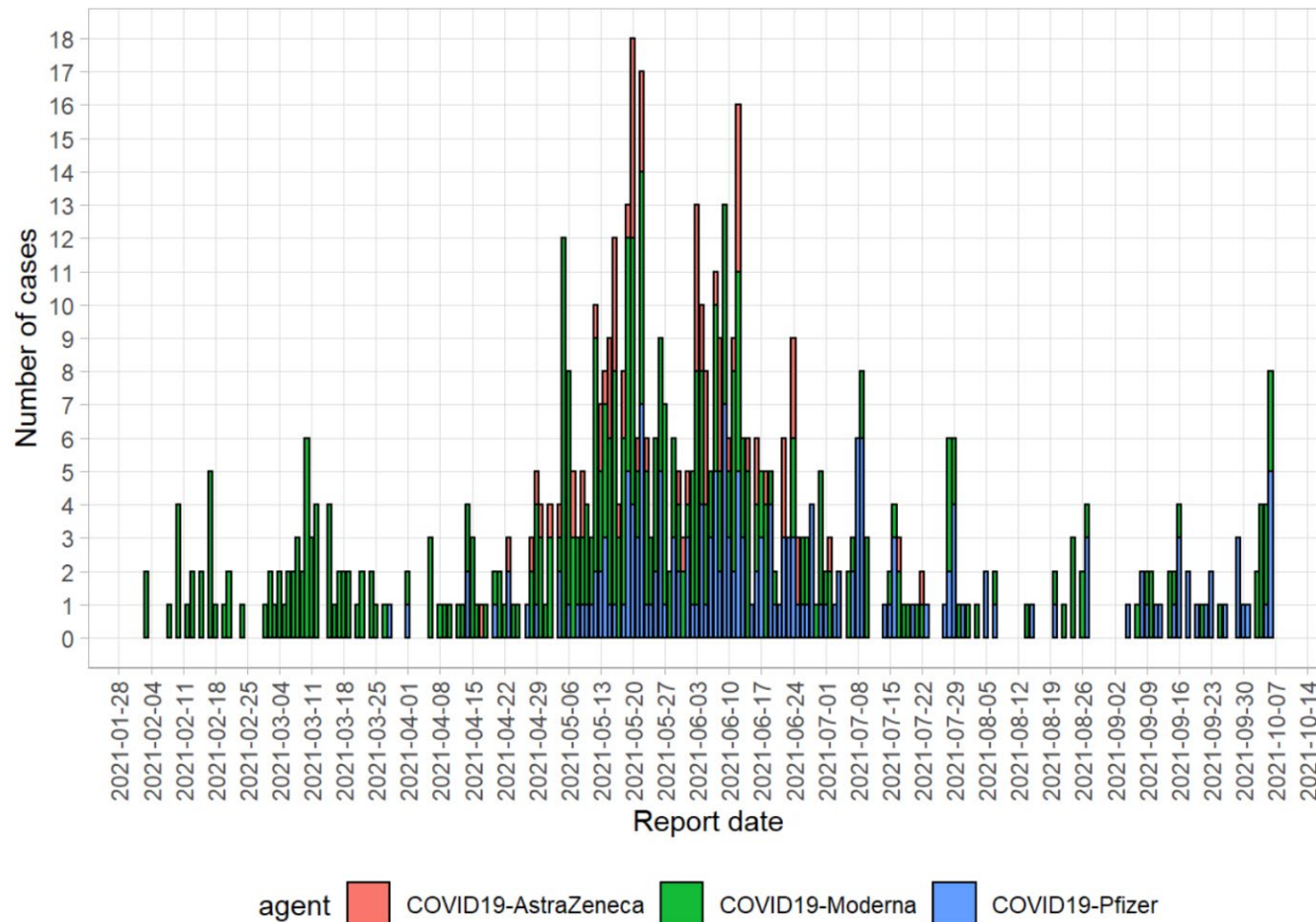


First Nations Immunization Update

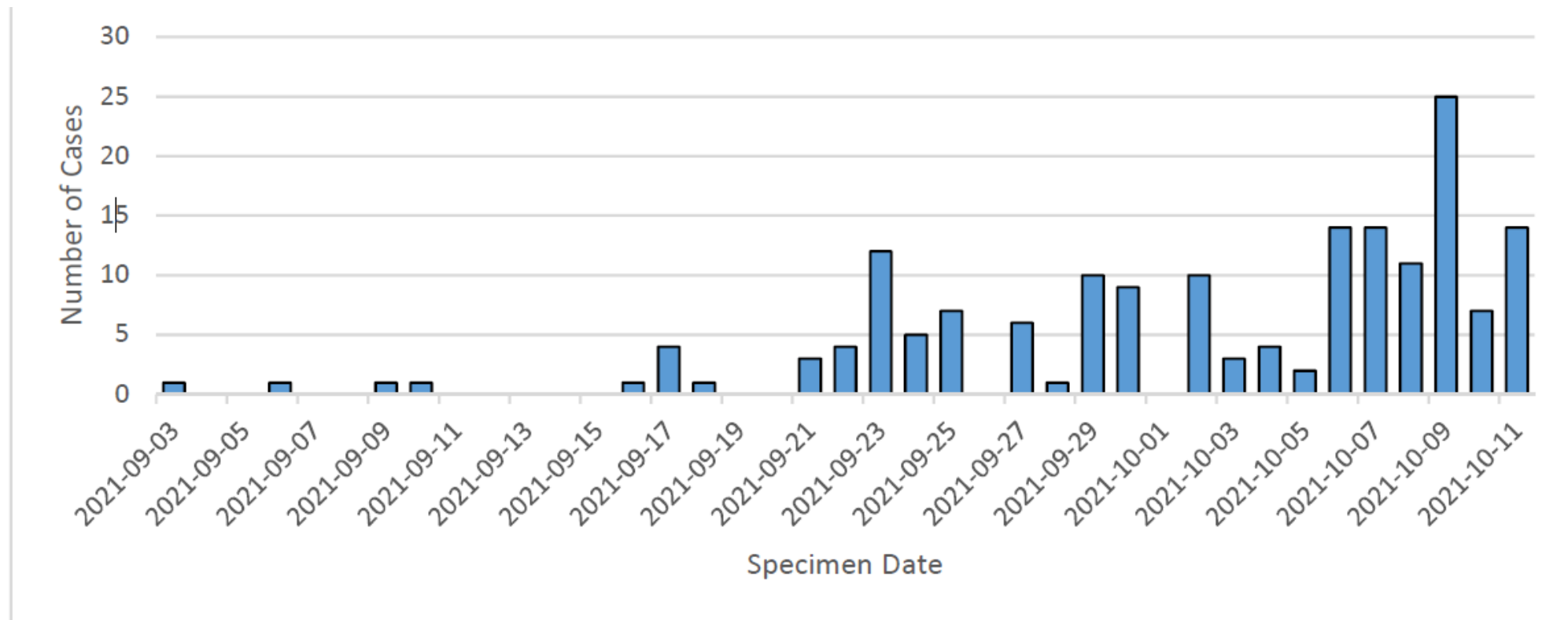
- 199,461 doses
- 105,342 people
- On-reserve coverage:
 - 82.6% full
 - 11.1% partial
- Off-reserve coverage
 - 64.5% full
 - 5.8% partial



Breakthrough case epidemic curve



Community 1: Outbreak began Sept. 3



COVID-19 NOVEL CORONAVIRUS



Overall cases

| Age Group | Frequency | Proportion |
|--------------------|------------|--------------|
| 0-9 | 38 | 22.2 |
| 10-19 | 43 | 25.1 |
| 20-29 | 32 | 18.7 |
| 30-39 | 17 | 9.9 |
| 40-49 | 13 | 7.6 |
| 50-59 | 14 | 8.2 |
| 60-69 | 11 | 6.4 |
| 70-79 | 2 | 1.2 |
| 80-89 | 1 | 0.6 |
| Total | 171 | 100.0 |
| Age range | 0-80 | |
| Average age | 36.0 | |
| Median age | 36.0 | |

Cases among fully-vaccinated people

| Age Group | Frequency | Proportion |
|--------------------|-----------|--------------|
| 12-19 | 8 | 13.8 |
| 20-29 | 17 | 29.3 |
| 30-39 | 5 | 8.6 |
| 40-49 | 8 | 13.8 |
| 50-59 | 11 | 19.0 |
| 60-69 | 7 | 12.1 |
| 70-79 | 1 | 1.7 |
| 80-89 | 1 | 1.7 |
| Total | 58 | 100.0 |
| Age range | 12-80 | |
| Average age | 38.9 | |
| Median age | 37.5 | |

Community 1: Severe outcomes by vaccination status

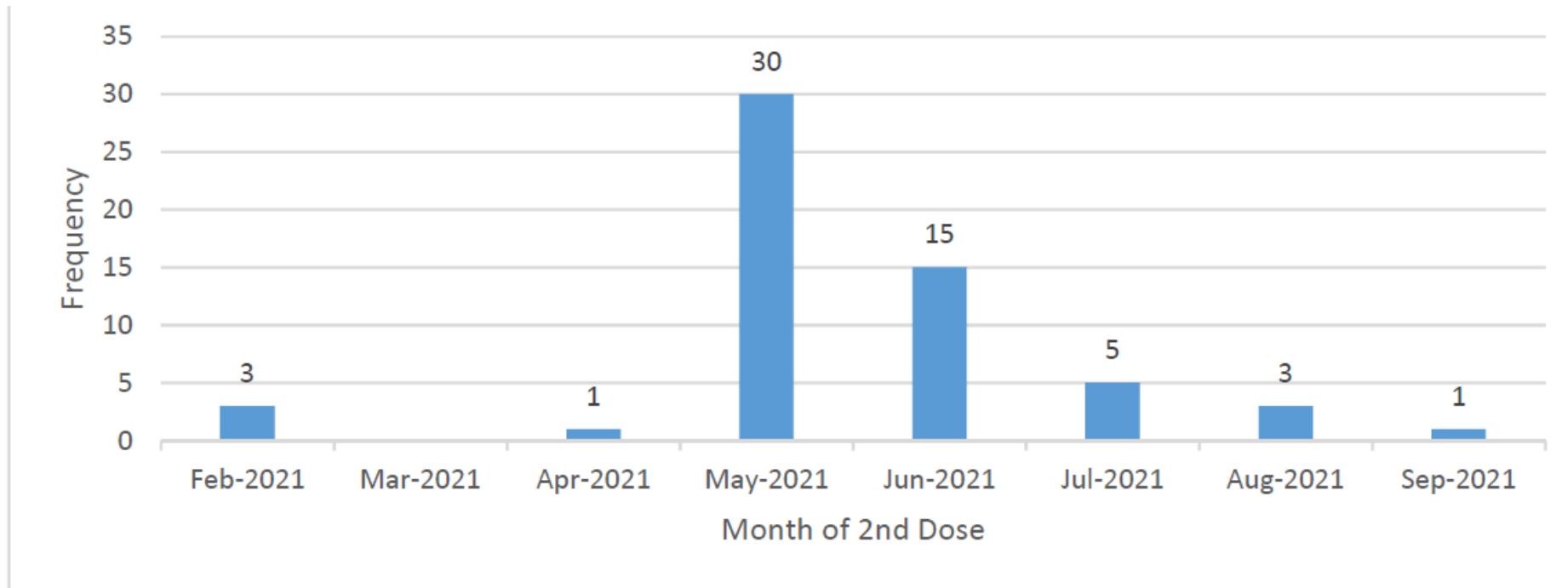
| Outcome | Frequency | Fully vaccinated | Partially vaccinated | Unvaccinated / not yet protected | Ineligible |
|-----------------|-----------|------------------|----------------------|----------------------------------|------------|
| Hospitalization | 4 | 0 | 1 | 2 | 1 |
| Death | 1 | 0 | 1 | 0 | 0 |

Community 1: Vaccination Status for All Eligible Cases

Of 171 cases, 124 were eligible to receive the vaccine

| Status | Count | Proportion of Eligible Cases |
|----------------------------------|-------|------------------------------|
| Fully vaccinated | 58 | 46.8 |
| Partially vaccinated | 18 | 14.5 |
| Unvaccinated / not yet protected | 48 | 38.7 |

Community 1: Fully vaccinated COVID cases, by month



Community 2: Outbreak began Sept. 19

Overall cases

| Age Group | Frequency | Proportion |
|--------------|------------|--------------|
| 0-9 | 40 | 36.7 |
| 10-19 | 24 | 22.0 |
| 20-29 | 10 | 9.2 |
| 30-39 | 13 | 11.9 |
| 40-49 | 10 | 9.2 |
| 50-59 | 7 | 6.4 |
| 60-69 | 5 | 4.6 |
| Total | 109 | 100.0 |

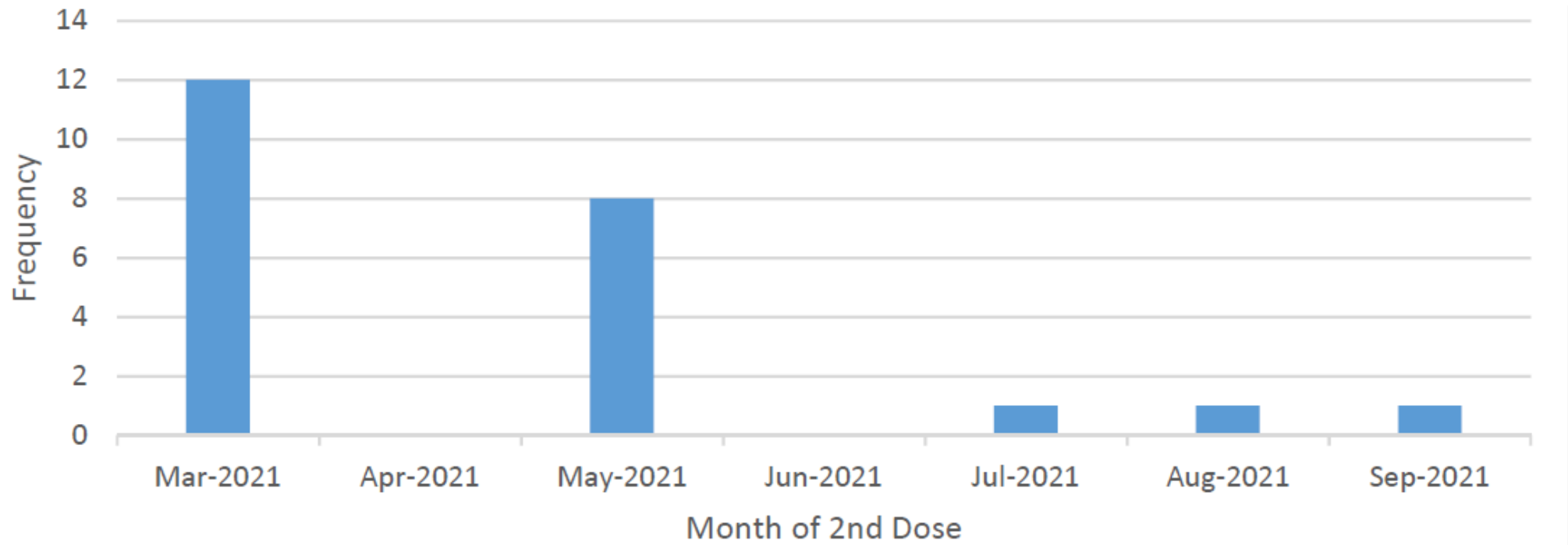
| | |
|--------------------|------|
| Age range | 0-68 |
| Average age | 21.2 |
| Median age | 15.0 |

Community 2: Vaccination Status for All Eligible Cases

Of 109 cases, 63 were eligible to receive the vaccine

| Status | Count | Proportion of Eligible Cases |
|----------------------------------|-------|------------------------------|
| Fully vaccinated | 23 | 36.5 |
| Partially vaccinated | 8 | 12.7 |
| Unvaccinated / not yet protected | 32 | 50.8 |

Community 2: 2nd Dose of fully vaccinated COVID cases, by month



Community 3: Outbreak began Sept. 27

Overall cases

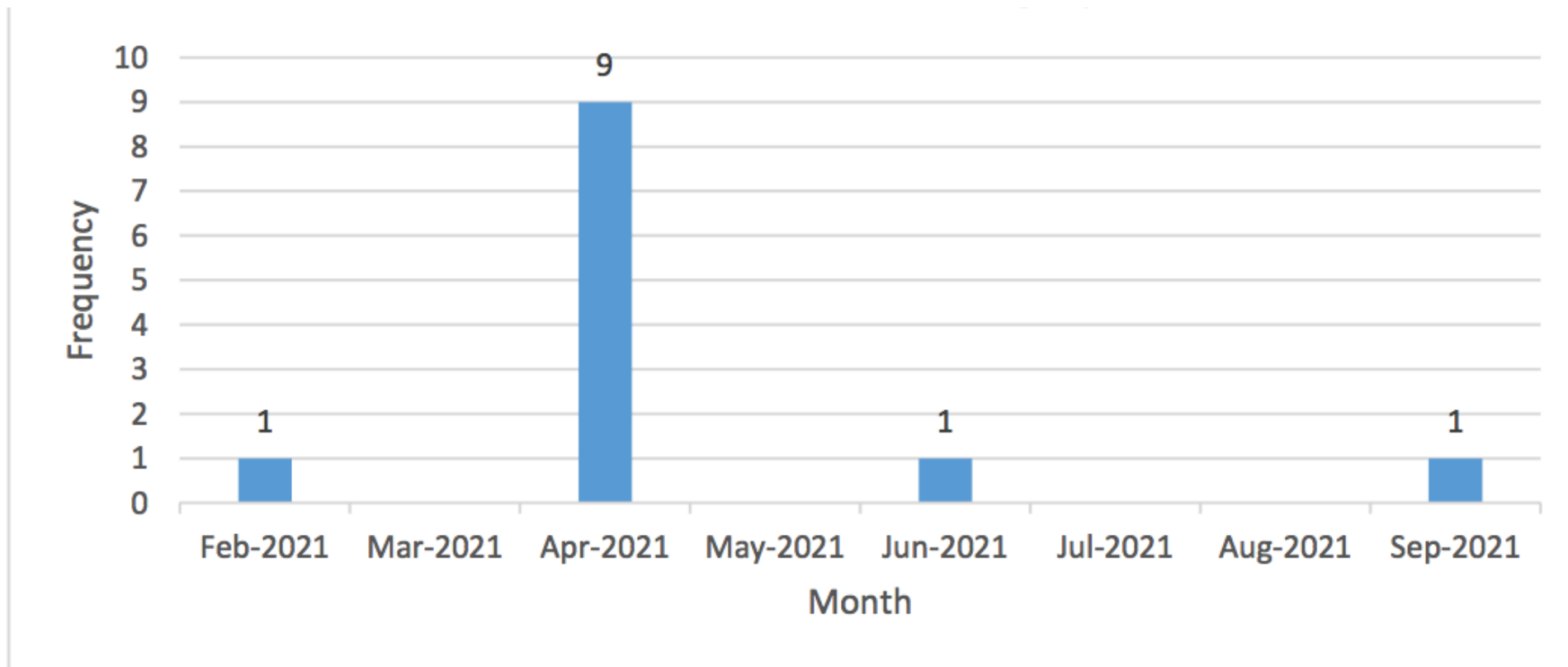
| Age Group | Frequency | Proportion |
|--------------|-----------|--------------|
| 0-9 | 10 | 38.5 |
| 10-19 | 4 | 15.4 |
| 20-29 | 3 | 11.5 |
| 30-39 | 2 | 7.7 |
| 40-49 | 1 | 3.9 |
| 50-59 | 1 | 3.9 |
| 60-69 | 4 | 15.4 |
| 70-79 | 1 | 3.9 |
| Total | 26 | 100.0 |

Community 3: Vaccination Status for All Eligible Cases

Of 26 cases, 12 were eligible to receive the vaccine

| Status | Count | Proportion of Eligible Cases |
|----------------------------------|-------|------------------------------|
| Fully vaccinated | 12 | 100.0 |
| Partially vaccinated | 0 | 0.0 |
| Unvaccinated / not yet protected | 0 | 0.0 |

Community 3: 2nd Doses of Fully-Vaccinated Cases, by month

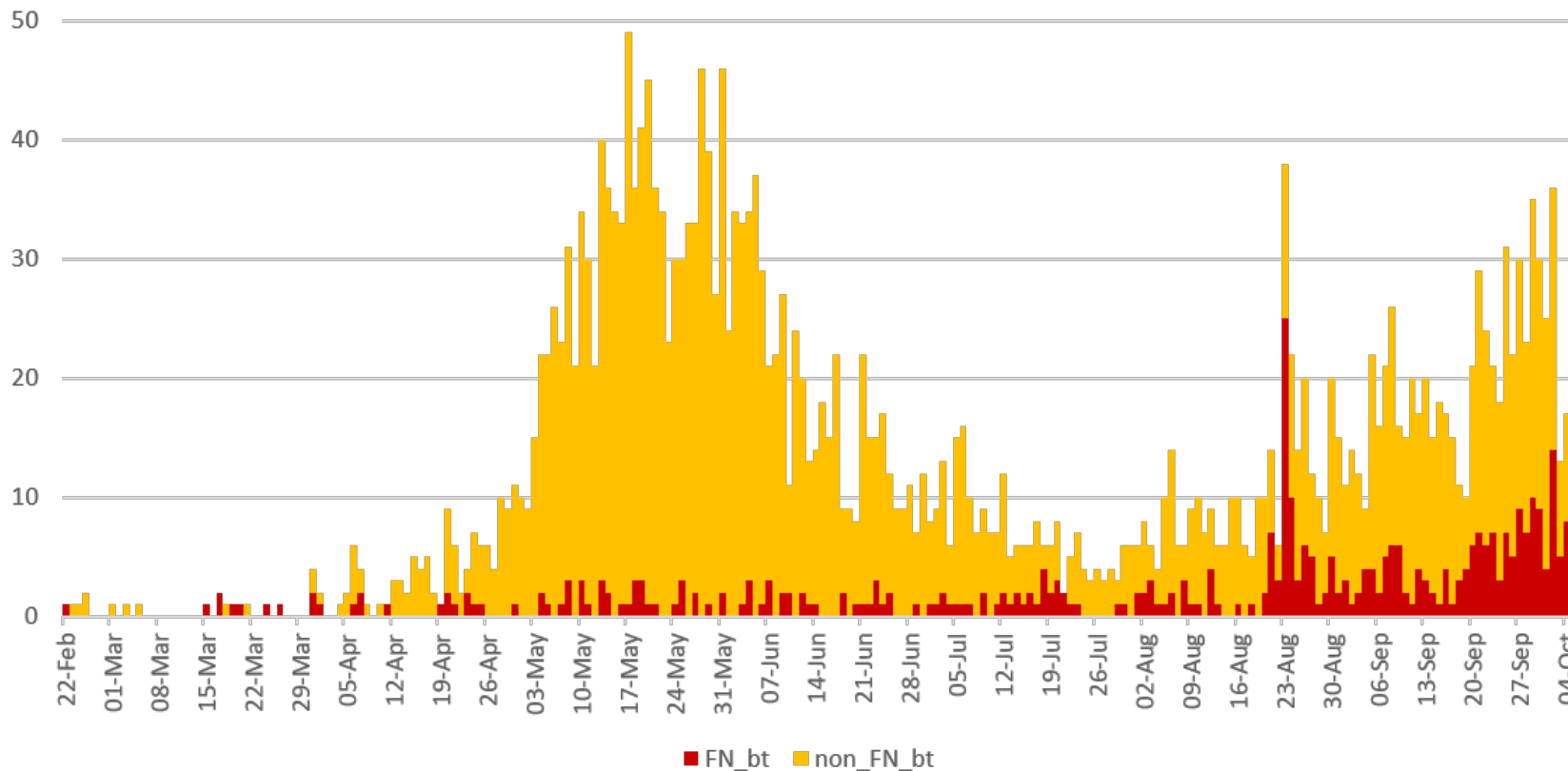


Infection After Vaccination

| | All of Manitoba, including First Nations | Non-First Nations | First Nations | First Nations proportion (%) |
|--------------------|--|-------------------|---------------|------------------------------|
| Breakthrough cases | 1,241 | 857 | 384 | 30.9 |
| Hospitalizations | 85 | 56 | 29 | 34.1 |
| ICU | 5 | 2 | 3 | 60.0 |
| Fatalities | 20 | 15 | 5 | 25.0 |

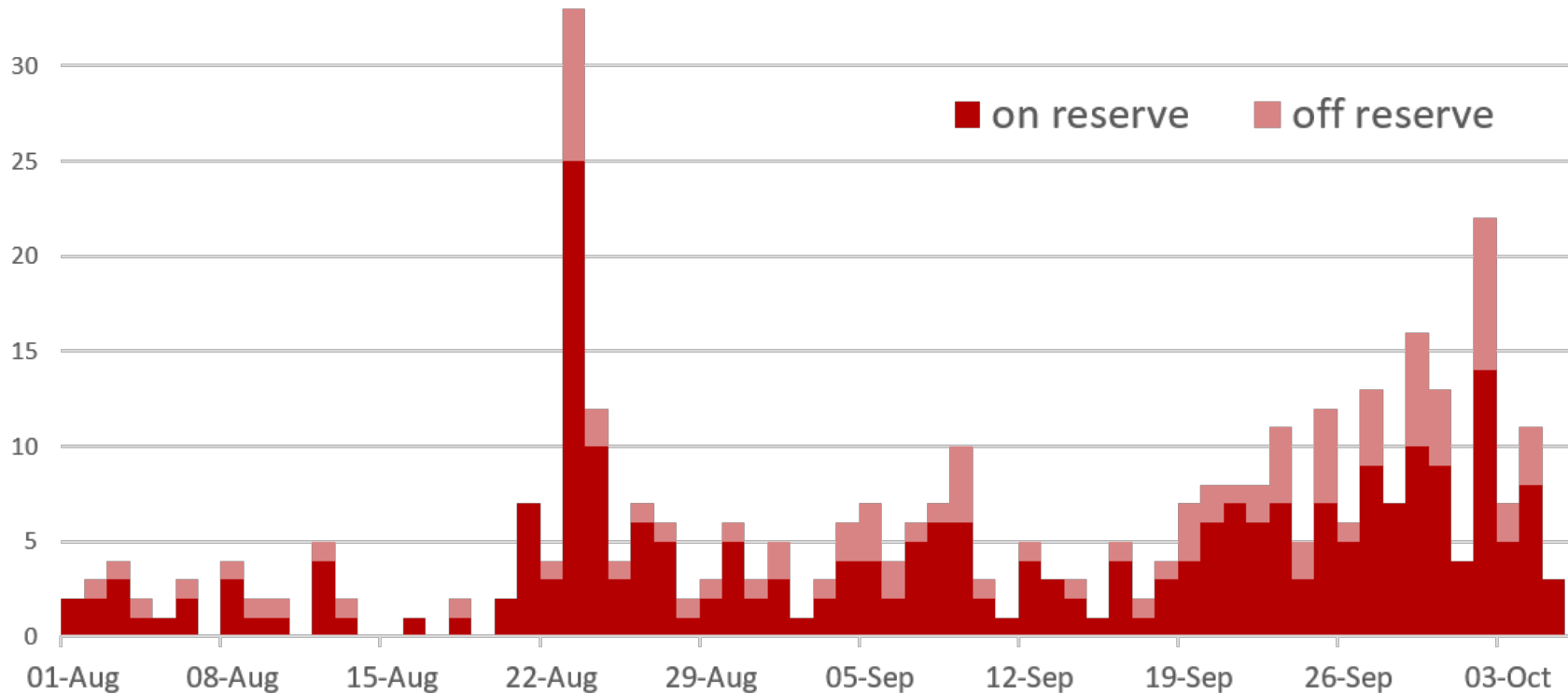
As of October 10

First Nation Breakthrough Cases



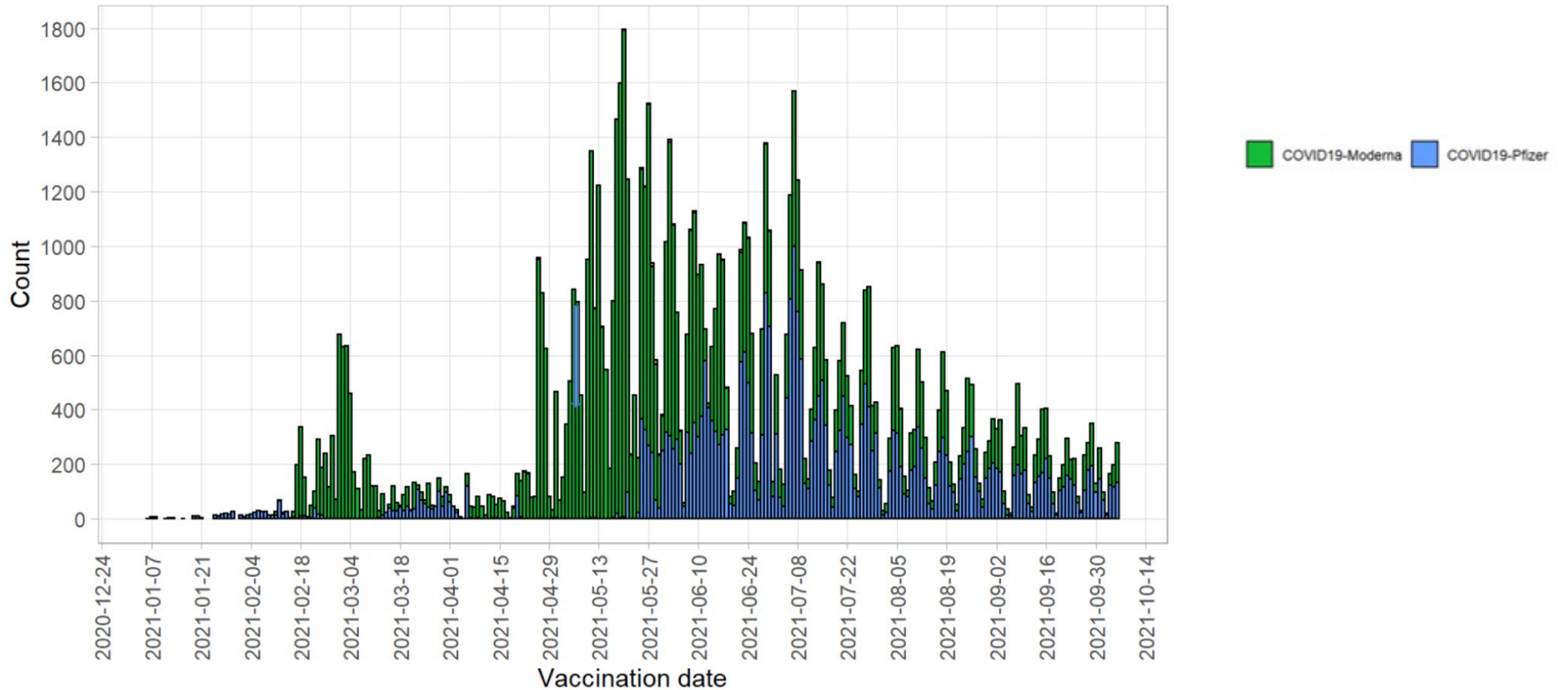
The proportion of breakthrough infections occurring in First Nations has increased since August.

First Nation Breakthrough Cases



Consistently, about 2/3 of breakthrough infections are in community

Vaccine Coverage Timeline for Dose 2





COVID-19

NOVEL CORONAVIRUS

Manitoba

